

# PNEUMATIC EXPAND-O-TURN

**USER MANUAL**

DOCUMENT ID: 70002

Have Questions?

**We're here for you.**



+1 866 543 8635  
+1 704 847 2464



info@roni.com  
www.roni.com



## LIFT-O-FLEX

MOBI-Crane |  | 



RONI, INC.  
8001 Tower Point Drive  
Charlotte, NC 28227 USA

# BEFORE YOU BEGIN



## READ

It is important that you read and understand this complete manual prior to using your LIFT-O-FLEX® ergonomic handling equipment. If you have any questions, contact your dealer or R on I, Inc.



+1 866 543 8635  
+1 704 847 2464



info@roni.com  
www.roni.com



8001 Tower Point Drive  
Charlotte, NC 28227 USA

---

## SPECIAL NOTES

The appearance of your LIFT-O-FLEX® lifter and the accompanying attachments may differ from the images displayed in this manual due to the custom nature of this equipment.

The maximum load of the Expand-O-Turn™ is determined by the model of LIFT-O-FLEX® Lifter and the length of the roll.

The Expand-O-Turn™ is only intended to be used with R on I's LIFT-O-FLEX® Lifters.

The Expand-O-Turn™ is only intended for indoor use in well-lit environments on level floors.

Additional technical documentation may be ordered from R on I, Inc.

LIFT-O-FLEX® is a registered trademark of R on I, Inc. of Charlotte, North Carolina.

“Where **Ergonomics** make  
**Economic** sense.”

# TABLE OF CONTENTS

<b>1. DESCRIPTION</b> .....	<b>4</b>
1.1 OVERVIEW	
<b>2. SAFETY</b> .....	<b>4</b>
2.1 STANDARD SAFETY MEASURES	
2.2 STORAGE AND TRANSPORT	
2.3 MOVEMENT	
2.4 LOADING AND UNLOADING	
<b>3. USE</b> .....	<b>5</b>
<b>4. WARRANTY</b> .....	<b>6</b>
<b>5. MAINTENANCE</b> .....	<b>8</b>
5.1 GUIDELINES	
5.2 EVERY DAY	
5.3 EVERY MONTH, OR AS NEEDED	
5.4 DECAL LOCATIONS	
<b>6. TROUBLESHOOTING</b> .....	<b>9</b>
<b>7. TECHNICAL DATA</b> .....	<b>10</b>
<b>8. DECLARATION OF CONFORMITY</b> .....	<b>15</b>



# 1. DESCRIPTION

## 1.1 OVERVIEW

The Pneumatic Expand-O-Turn™ is designed to lift rolls by the core and then turn them, for example, to feed into machines. The roll is gripped in the core by an expander that is controlled electrically from the control box by the handle. Distinct light signals indicate whether the expander is activated or not.



To prevent accidental unloading, the roll is freed by a two-hand grip. When the reel is gripped, it is rotated steplessly by a joystick or a crank handle and can be positioned vertically or horizontally. The expander is equipped with small rollers on the top side to aid the unloading of heavier reels.

**Note:** The displayed image may not exactly represent your equipment as various options are available.

## 2. SAFETY

### 2.1 STANDARD SAFETY MEASURES

The operator should use the personal safety equipment (e.g. protective shoes) that handling the specific goods requires.

Stated maximum load must not be exceeded.

Be aware of the risk of crushing present between the attachment and the lifter legs or the floor when raising or lowering the load. Avoid putting hands or other parts of your body under the load.

### 2.2 STORAGE AND TRANSPORT

When storing or transporting the lifter, the remote control, motor cable, and power cable to the control box should be disconnected. If the Expand-O-Turn™ is attached to a lifter when transported, the lifter should be carefully tied down to minimize the tipping risk. If the Expand-O-Turn™ is transported separately, it should be carefully packed to protect the expander and control box.

## 2.3 MOVEMENT

The Expand-O-Turn™ should always be lowered to the lowest possible position before moving the lifter to have the safest and most stable handling possible. Be cautious when passing thresholds, cables, and other objects on the floor. When moving heavy loads, the handling can be easier if the directional lock is applied on the lifter.

## 2.4 LOADING AND UNLOADING

The operator is responsible for the correct use of the Expand-O-Turn™. Do not place any part of your body under the load when lowering the load.

# 3. USE

When lifting a roll, the expander core is inserted into the roll as far as possible.

**Lock** the roll by pushing the **Expand** button. The core of the unit will expand and tighten on the core of the roll, making it safe to lift once the green light comes on.

**Lift** the roll using the remote control hand pendant.

**Rotate** the roll 90 degrees to the front by:

- 1 using the remote control and joystick  
(as equipped with electric turn models)

**OR**

- 2 using the manual crank handle  
(as equipped with manual turn models)

**Release** the roll by pressing the **Retract** button and the **Red** button at the same time. Hold the buttons for three seconds to completely evacuate the compressed air. The red light will come on, indicating that the expander can be removed from the center of the roll.



*Always rotate the roll to a horizontal position and retract as soon as possible after lifting. Leaving the core expanded for more than a few minutes will result in a fault warning. See trouble shooting for a detailed description of this.*



# 4. WARRANTY

## Limited Warranty

R on I, Inc. warrants this product to be free of defects in material and workmanship during the warranty period. Our warranty obligation is to provide a replacement for a defective original part if the part is covered by the warranty, after we receive a proper request from the warrantee (you) for warranty service.

## Who may request service?

Only a warrantee may request service. You are the warrantee if you purchased the product from R on I, Inc. or from an authorized distributor and R on I, Inc. has been fully paid.

## What is an “original part”?

An original part is a part used to make the product as shipped to the warrantee.

## What is a “proper request”?

A request for warranty service is proper if R on I, Inc. receives: 1) a photocopy of the customer invoice that displays the shipping date; and, 2) a written request for warranty service that includes your name and phone number. Requests may be sent using the following methods:

### Mail

R on I, Inc.  
8001 Tower Point Drive  
Charlotte, NC 28227

### Fax

Toll Free 1-866-543-9532  
Direct 1-704-847-6739

### Email

info@roni.com

## What is covered under the warranty?

After R on I, Inc. receives your request for warranty service, an authorized representative will contact you to determine whether your claim is covered by the warranty. Before providing warranty service, R on I, Inc. may require you to send the entire product, or just the defective part(s) to its facility in Charlotte, North Carolina.

## How long is the warranty period?

The warranty period for original dynamic components is one (1) year. For batteries, the warranty period is 30 days. The warranty period begins on the date when R on I, Inc. ships the product to the warrantee.

## Warranty Evaluation

All parts sent back (freight paid by customer) to R on I for warranty replacement and/or repair will be evaluated. R on I will determine if the part is a warranty issue or if it has been damaged due to misuse or negligence. A written report will be issued detailing the investigation of the part and whether or not the part is classified as warranty.

## What is not covered by this warranty?

1. Labor
2. Freight
3. Occurrence of any of the following, which will automatically void the warranty:
  - product misuse
  - negligent operation or repair
  - corrosion or use in corrosive environments
  - inadequate or improper maintenance
  - damage sustained during shipping
  - collisions or other incidental contacts causing damage to the product
  - unauthorized modifications: do not modify the product in any way without first receiving written authorization from R on I, Inc. as modifications(s) might make the product unsafe to use or could potentially cause excessive and/or abnormal wear

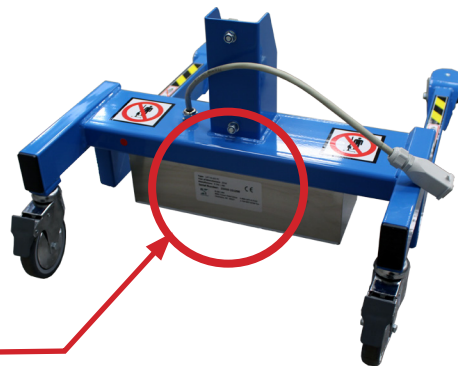
## If a defective part is warranted, how will R on I, Inc. correct the problem?

R on I, Inc. will provide an appropriate replacement for any covered part. An authorized representative of R on I, Inc. will contact you to discuss your claim.

## Warranty Procedure

In the event that a part is damaged, broken, or just plain does not work, please contact R on I via phone or email to establish a dialogue to identify and diagnose the problem. Please have your lifter serial number when you call or email?

(on the motor cover underneath the intermediate)



# 5. MAINTENANCE

## 5.1 GUIDELINES

Failure to perform the recommended maintenance may void the equipment warranty.

## 5.2 EVERY DAY

Wipe the Expand-O-Turn clean if it is dirty. Do not use water or pressure washers.

## 5.3 EVERY MONTH, OR AS NEEDED

Check the screws on the rod holding the expander blocks in place. These need to be tightened if needed or if the machine has not been used for some time. Torque 12Nm.  
Check that the Expand-O-Turn™ is not leaking. This is done by pressing the Expand button. It is normal that pressurized air is added to the expander with a few seconds interval to keep the pressure at the correct level. If the compressor is running continually, you should contact your dealer or R on I, Inc.

Check the functions of the control box and that the indicator lights work properly (see use).

Check that the bolts holding the Expand-O-Turn™ to the mast are correctly tightened.

Check all electrical connections and replace damaged or worn parts.

Check the rubber grips holding the roll. If the rubber surfaces are work down, replace the part. (See chapter 7-Spare Parts)

Check that the following signs and decals are attached and are fully legible.

## 5.4 DECAL LOCATIONS

DECAL	DESCRIPTION	PLACEMENT
Unit Designation	Decal with serial number	One decal on the control box and one decal on the attachment
Instruction Decal	Decal instructing the operator	Front of the control box
Max Load	Max load of the Expand-O-Turn	Back of the Expand-O-Turn



## 6. TROUBLESHOOTING

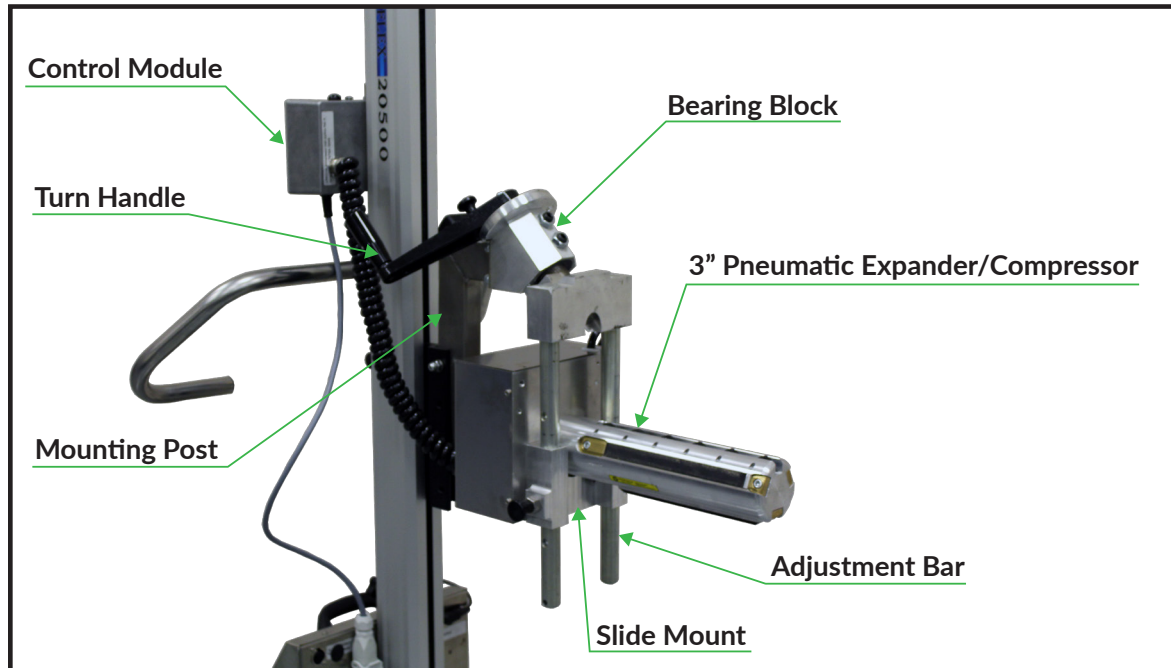
The unit is equipped with a timer to prevent damage to the compressor in case there is a leak. When the expand button is pressed, a 2-minute timer will start. During this time the compressor will run if the pressure is below the set level. If the pressure is below the set level, the red light will be on; if it is above, the green light will be on. When the timer expires after two minutes, both red and green lights will be off. If the pressure drops below the set level after the timer has expired, the compressor will not run and a warning signal will sound and a red light will come on. The unit is reset to normal mode by pressing the retract button and the red inhibit button. The unit can be expanded again by pressing the expand button. Resetting the fault warning and then expanding multiple times may damage the unit.

If the Expand-O-Turn is leaking compressed air, contact your dealer or Roni, Inc.

Other troubles--see the manual for your LIFT-O-FLEX® Lifter.



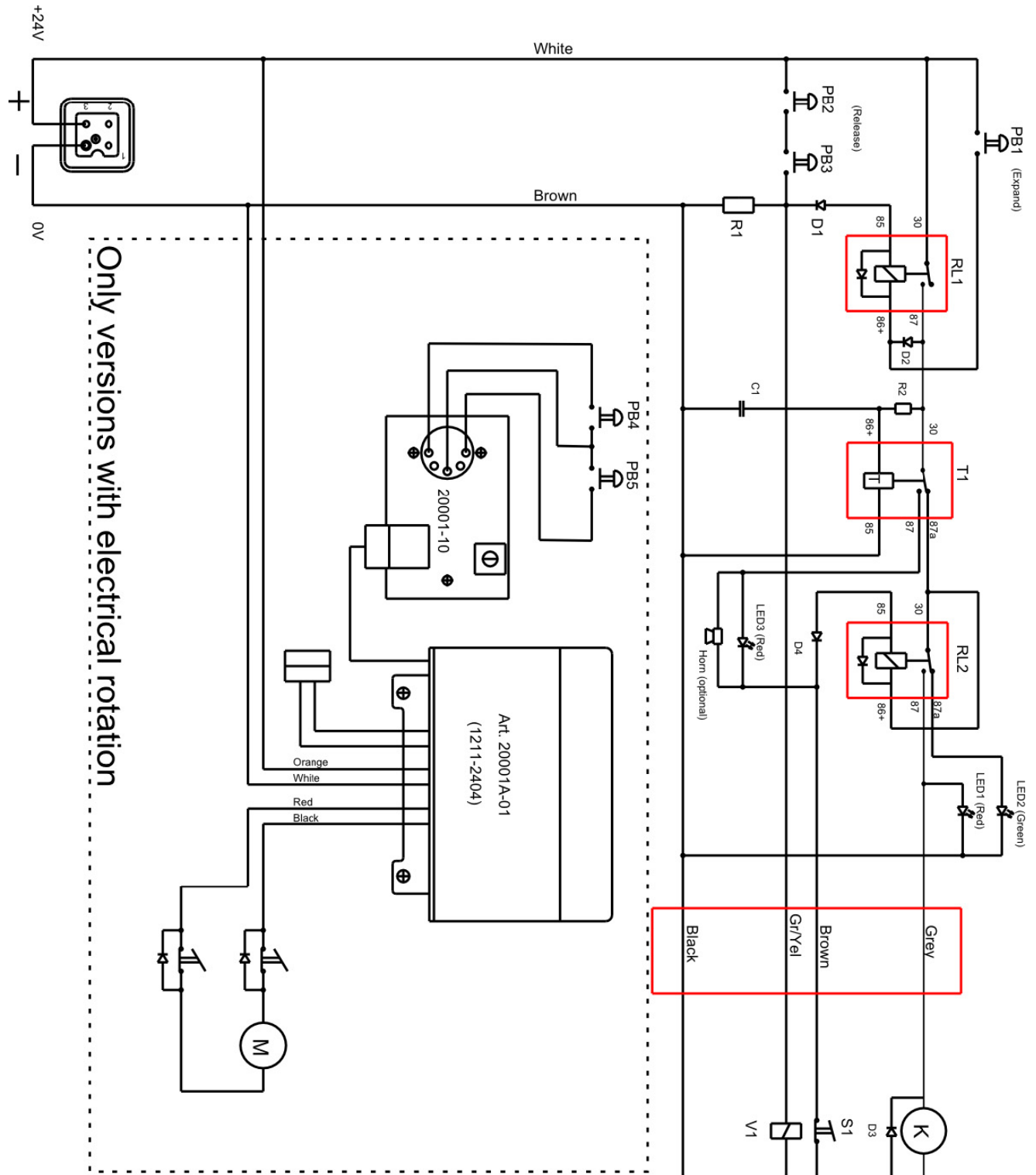
## 7. TECHNICAL DATA



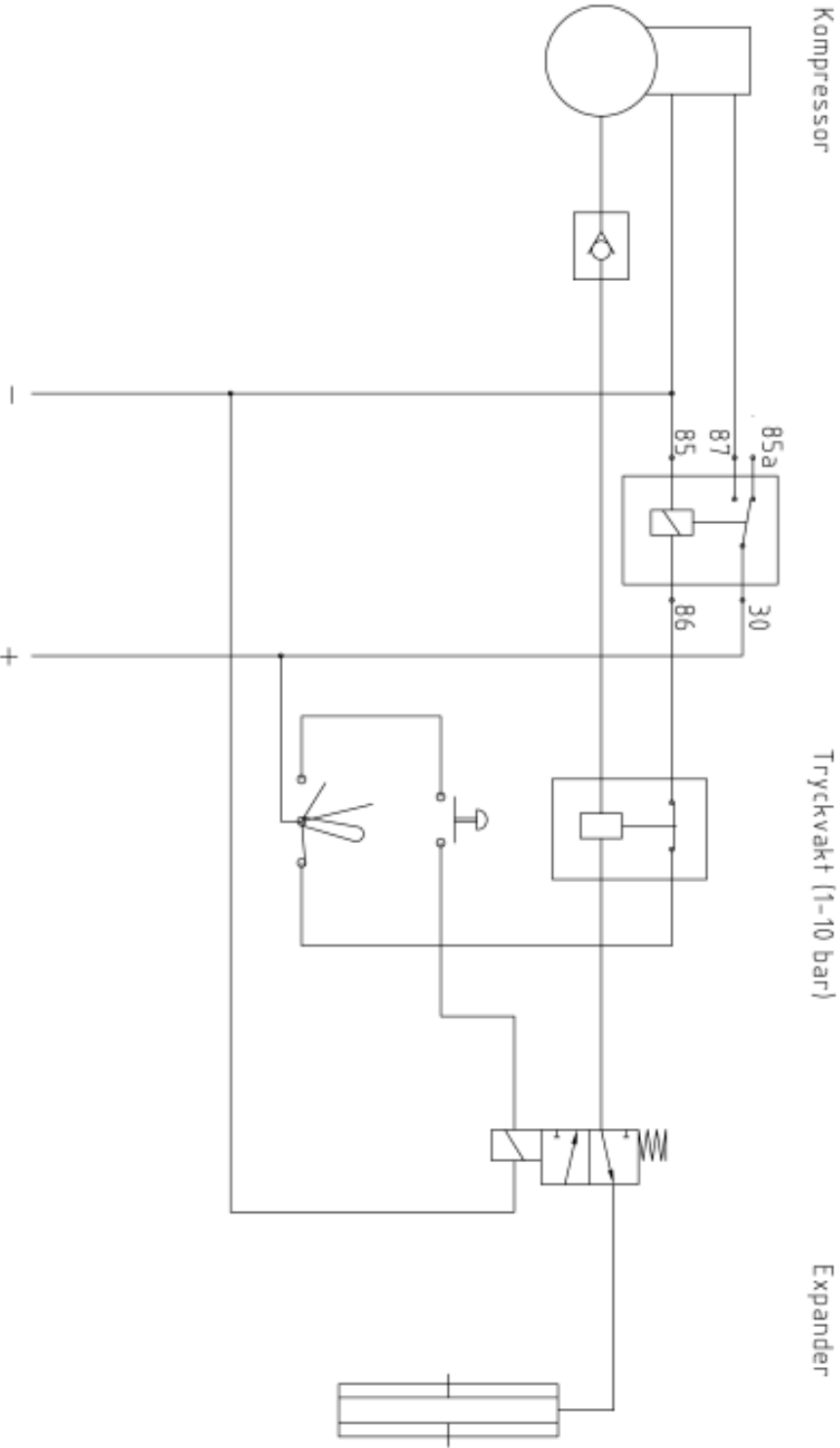
### Note

Due to the variety of sizes available on the Expand-O-Turn™, part numbers are not available. When ordering spare parts, please identify the item number along with your company and date of lifter purchase along with roll core size purchased.

# 8. ELECTRICAL SCHEMATICS



# 9. PNEUMATIC SCHEMATICS



# NOTES





## 8. DECLARATION OF CONFORMITY

Manufacturer	Pronomic AB Box 5504 192 05 Sollentuna Sweden
Model Designation	Pneumatic Expander <input type="radio"/> 17971 <input type="radio"/> 17972 <input type="radio"/> 17980
Serial Number	

Authorized to compile the technical file	Samuel Pierre, Pronomic AB, BOX 5504, 192 05 Sollentuna, Sweden
--	---

Applied directives:

2006/42/EG	Machinery Directive
2004/108/EG	EMC Directive

Applied standards:

SS-EN ISO 12100:2010	Safety of machinery - General principles for design - Risk assessment and risk reduction (ISO 12100:2010)
SS-EN 349+A1:2008	Safety of machinery - Minimum gaps to avoid crushing of parts of the human body

We hereby declare that the above-referenced machine, built and equipped with attachments included in this manual, is in conformity with the applicable conditions state in the directives and standards.

Sollentuna, 2012-10-30



.....  
Kjell Jansson, Pronomic AB





# LIFT-O-FLEX

MOBI-Crane  

## **RONI, INC.**

8001 Tower Point Drive  
Charlotte, NC 28227  
USA

+1 866 543 8635

[info@roni.com](mailto:info@roni.com)

[www.roni.com](http://www.roni.com)

R on I reserves the right to change this information without further notice and holds no liability for printing errors in this content.

Copyright © 2016 R on I, Inc. All Rights Reserved.